



Zydacron
Intelligent Meeting Solutions

**Zydacron PCI V.35
OEM Installation
and User's Guide**

Zydacron, Inc.
7 Perimeter Road
Manchester, NH 03103
Doc. P/N: MA40083-ENG, Rev. A
December, 2001

Copyright 2000 - 2001 by Zydacron, Inc.
Zydacron, Inc.
7 Perimeter Road
Manchester, NH 03103
U.S.A.

PROPRIETARY RIGHTS NOTICE: All rights reserved. No part of this material may be reproduced or transmitted in any form or by any means, electronic, mechanical, or otherwise, including photocopying and recording or in connection with any information storage or retrieval system, without permission in writing from Zydacron, Inc.

Microsoft Windows NT, Windows 98, Windows 2000, and NetMeeting are Registered Trademarks of Microsoft Corporation.

All Brand and product names are recognized as trademarks™ or registered trademarks™ of their respective companies.

Printed in the United States of America.

“ZYDACRON EXPRESSLY DISCLAIMS ALL WARRANTIES, EXPRESSED OR IMPLIED, INCLUDING, BUT NOT LIMITED TO, THE IMPLIED WARRANTIES OF MERCHANTABILITY AND FITNESS FOR A PARTICULAR PURPOSE. UNDER NO CIRCUMSTANCES INCLUDING NEGLIGENCE SHALL ZYDACRON BE LIABLE FOR ANY INCIDENTAL, SPECIAL OR CONSEQUENTIAL DAMAGES, WHETHER FORESEEABLE OR UNFORESEEABLE, THAT RESULT FROM THE USE, THE INABILITY TO USE, OR THE INSTALLATION OF THE ZYDACRON SOFTWARE AND/OR HARDWARE.”

If the Zydacron Software to be furnished under this contract is to be supplied to the Department of Defense (DoD) of the United States Government, the Software is classified as "Commercial Computer Software" and the Government is acquiring only "restricted rights" in the Software and its documentation as that term is defined in Clause 252.227-7013(c)(1). If the Zydacron Software is supplied to any unit or agency of the United States Government other than the DoD, the Government's rights in the Software and its documentation will be as defined in clause 52.227-19(c)(2) of the FAR or, in the case of NASA, in Clause 18-52.227-86(d) of the NASA Supplement to the FAR.

“Warning: Changes or modifications to this unit not expressly approved by the party responsible for compliance could void the user's authority to operate the equipment.”

Table of Contents

1. Preface.....	1
2. Hardware Installation:	2
3. Software installation and operation instructions:	2
4. Software Installation:	5
5. Network Setup:	7
Appendix A - Crypto Support	11

1. Preface:

Manual Overview:

This manual explains how to install and use your Zydacron software. Please refer to your product *Installation Guide* for setup issues.

Audience:

This manual assumes a working knowledge of relevant Microsoft Windows operating systems.

Minimum Requirements:

Hardware and software requirements depend on the particular codec (and in some cases the communications board) you are using. For more information see your Codec *Installation Guide*.

Customer Support:

For service, contact your Zydacron reseller.

To test your system, call the Zydacron Test Station at: **1 + (603) 644-6950**. Zydacron provides this test station to enable you to easily test your system. The test station can be called at 2x64k (dial the same number twice) or one channel up to 384k. A successful connection to the Test Station provides you with both video and audio.

You can also visit the Zydacron website, www.zydacron.com, for information on the latest product offerings.

Approvals:

EN 55022:1994/A1:1995/A2:1997 Class B ITE emissions requirements (EU)
ICES-003 Issue 3 Class B Digital Apparatus emissions requirements (Canada)
FCC 47 CFR Part 15 Class B emissions requirements (USA)
VCCI Class B ITE emissions requirements (Japan)
AS/NZS 3548: 1995/CISPR 22 Class B ITE emissions requirements (Australia)

2. Hardware Installation:

- 2.1. Insert the PCI V.35 card into a free PCI slot.
- 2.2. Connect the codec and Zydacron V.35 PCI via the CB-1072-001 Slot 0 MVIP cable.
- 2.3. Connect the high density to the Zydacron PCI V.35.
- 2.4. Connect the dual V.35 or RS449 dual channel connectors to the corresponding inputs on your IMUX.
- 2.5. Connect the RS366 dual channel connectors to the corresponding inputs on your IMUX.
- 2.6. Boot your system and follow the software and operation installation instructions.

3. Software installation and operation instructions:

Plug and Play:

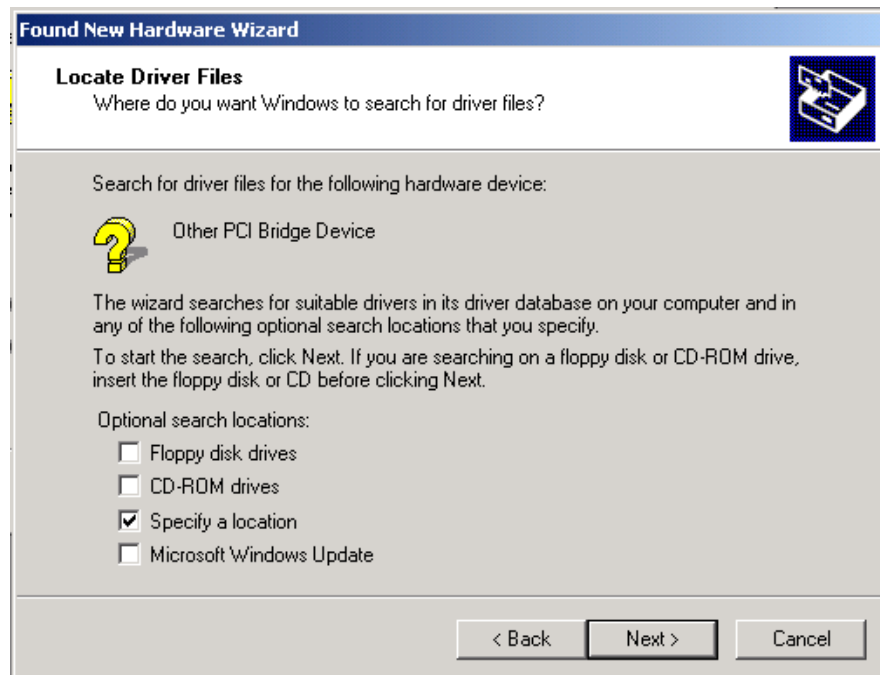
- 3.1. Follow the on screen prompts as displayed below to install a V.35 PCI.
- 3.2. Once Plug and Play has located the card, click on next to continue.



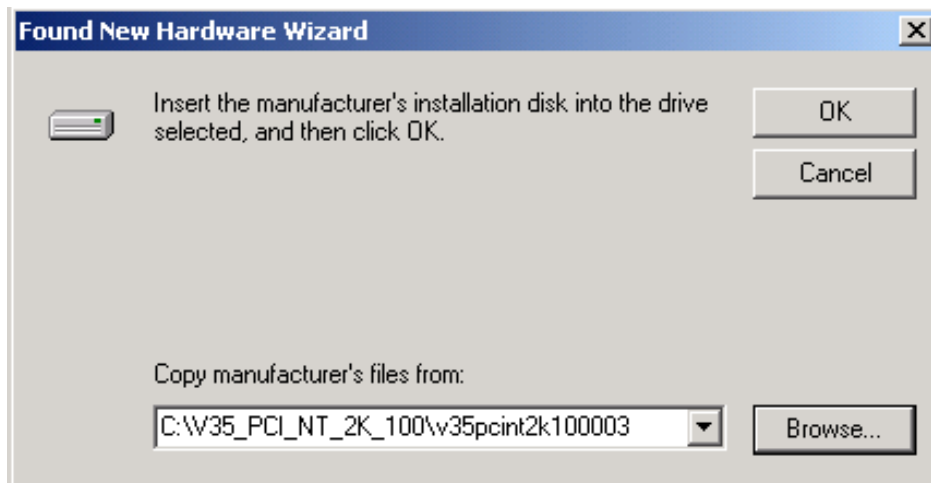
3.3. Select “Search for a suitable driver for my device” and click on next.



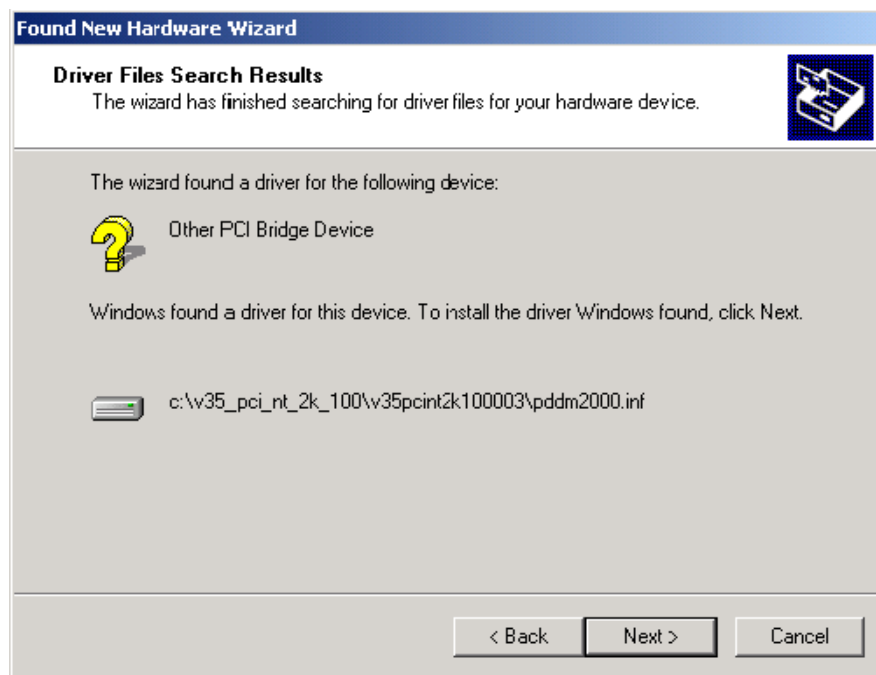
3.4. Select the location that holds the *pddm2000.inf* file and hit next.



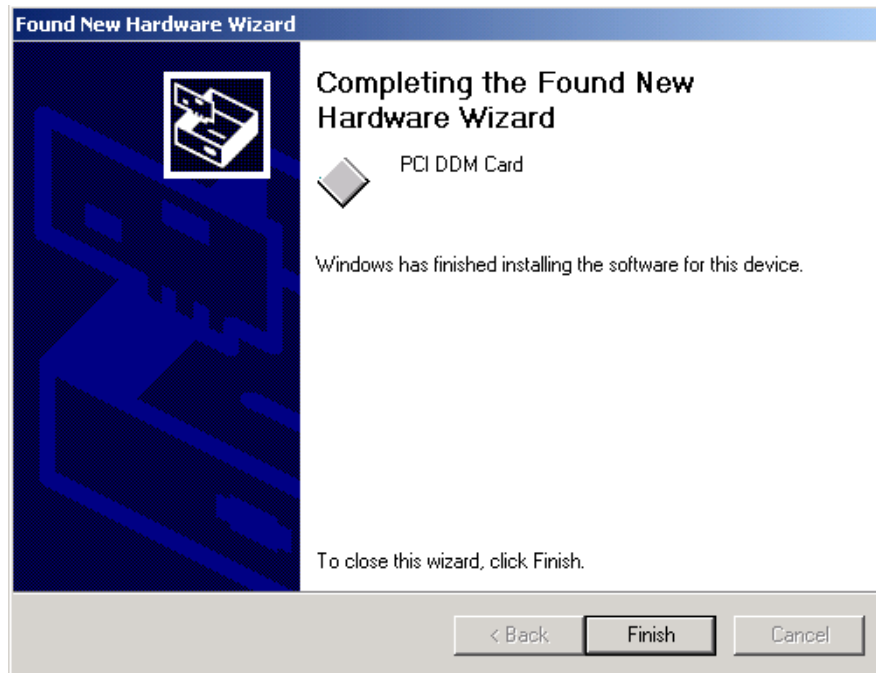
- 3.5. If you selected specify a location you will need to enter the path or browse for the folder here.



- 3.6. Verify that the installation selected the correct inf file and hit next to install the device driver.



- 3.7. Click on finish to complete the device driver installation.

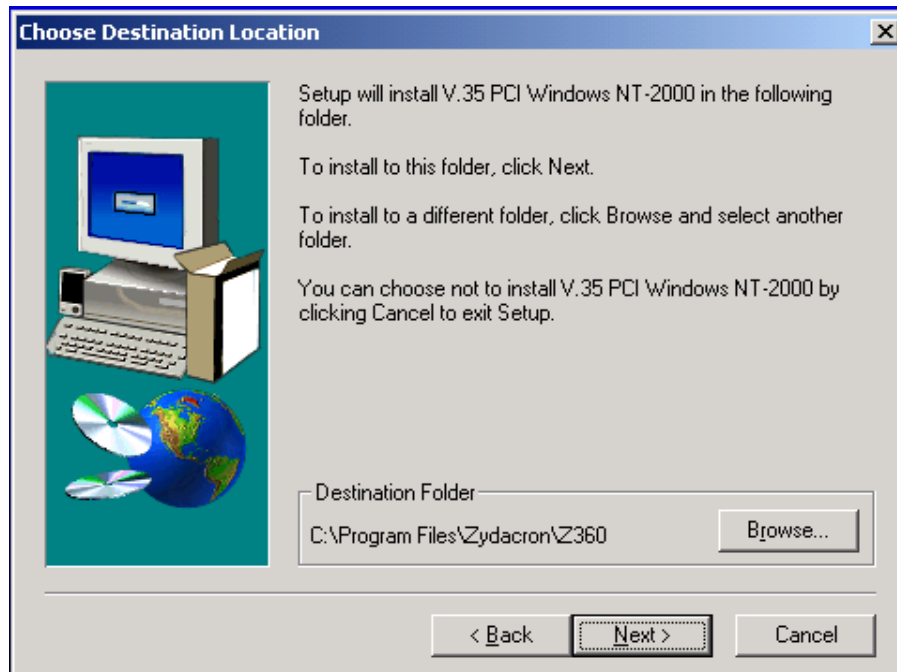


4. Software Installation:

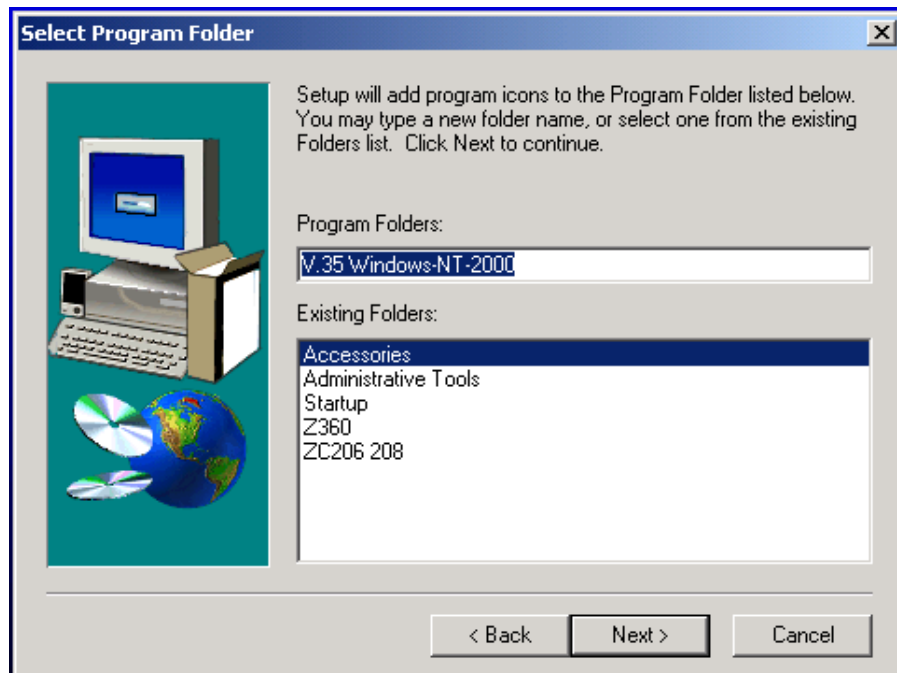
- 4.1. Follow the on screen prompts as displayed below to install the software associated with your new V.35 PCI communication device.
- 4.2. Locate the setup file that accompanied the device.
- 4.3. Run setup or put the CD-ROM in the drive to auto start the installation.
- 4.4. Click on next to continue.



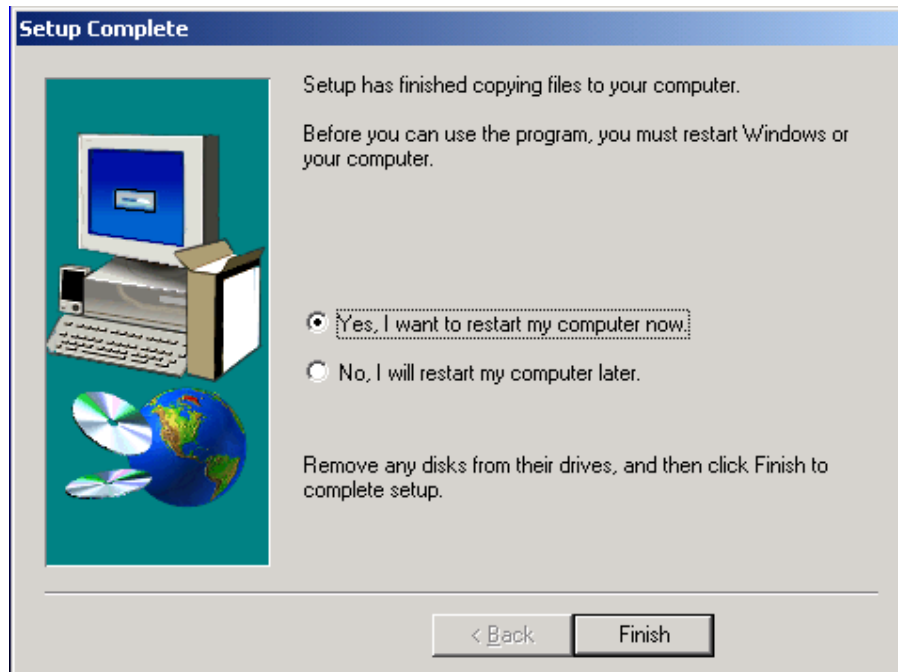
4.5. It is recommended to leave it on the default directory and click on next to continue.



4.6. Click on next to continue.



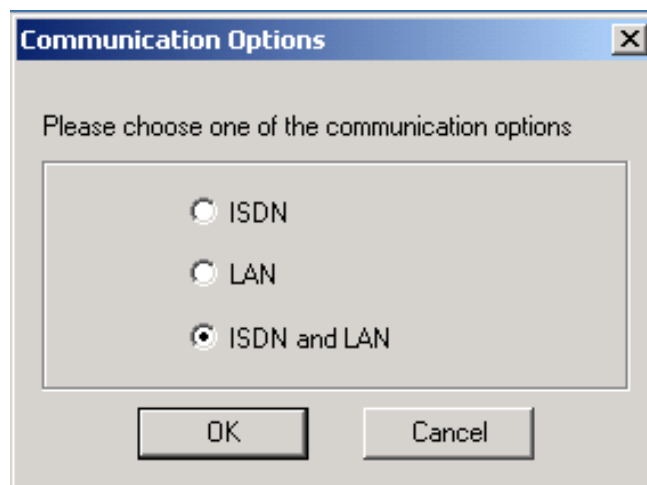
4.7. Select the “Yes. I want to restart my computer now” option and click on finish.



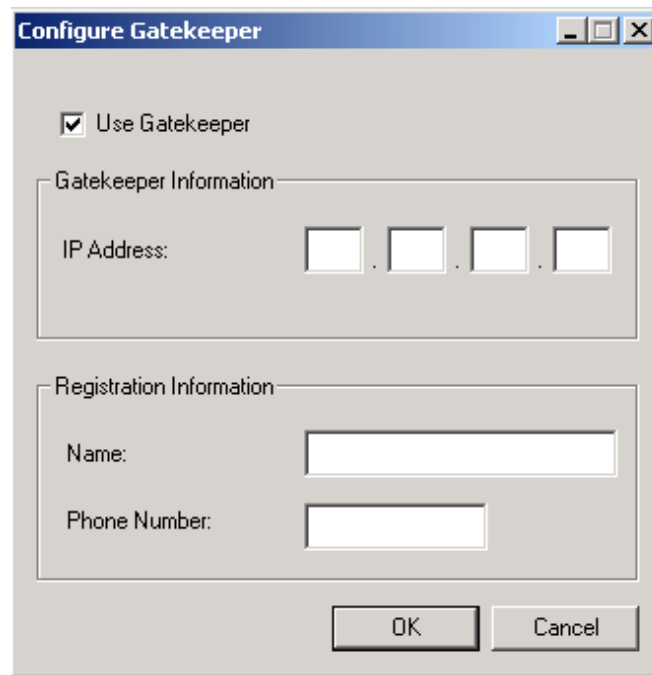
5. Network Setup:

Follow the on screen prompts as displayed below to setup the software. The first screen will display as soon as your computer has rebooted. You can re-run the network setup at any time by selecting Network Setup in the program group for the V.35.

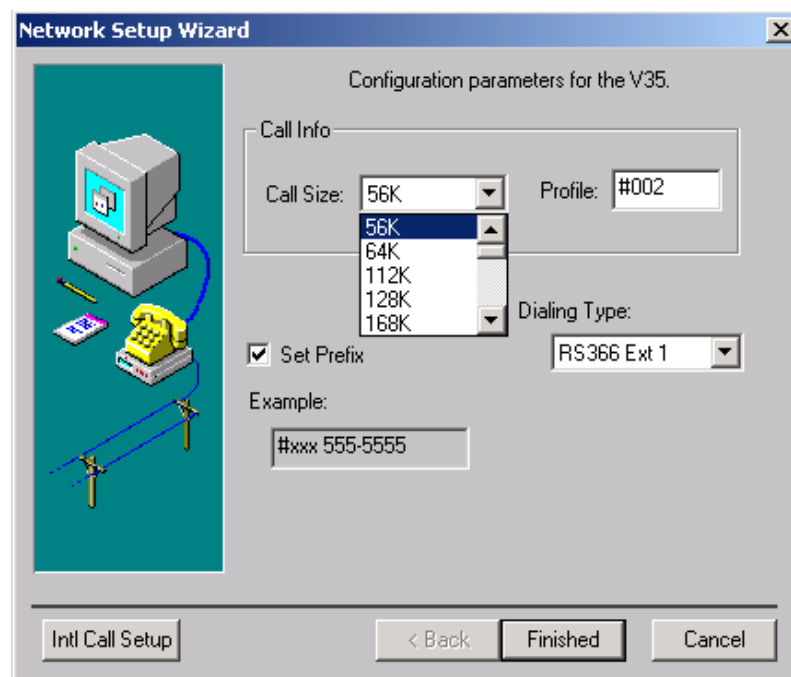
5.1. Select ISDN and LAN and hit ok.



- 5.2. Insert your gatekeeper information. If you don't have a gatekeeper then unselect the top check box and hit ok.



- 5.3. Dialing Configuration:



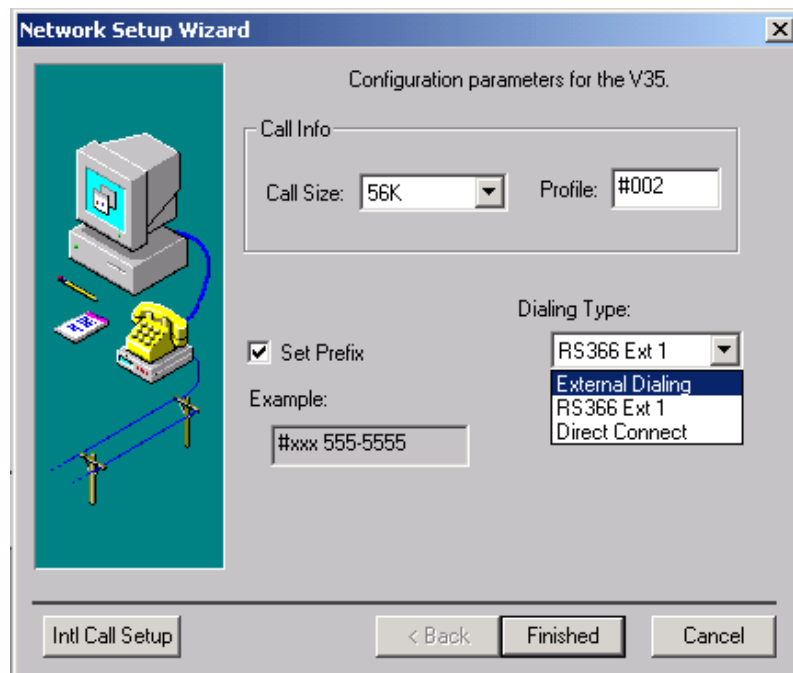
- 5.4. Configure the dialing type per your network parameters. Click on the lower left hand corner “Intl Call Setup” to take you to the next screen if you wish to setup international calling options. If you don’t then select finished.

Note: There are three different dialing types as shown in the figure below; External Dialing, RS366 Ext 1, and Direct Connect. The following is an explanation of each type:

External Dialing – This setting should be selected if you are calling and hanging up from the IMUX. After the call is placed and connected properly the application will be triggered to answer when CD is active. If CD drops the application will respond and hang up the call.

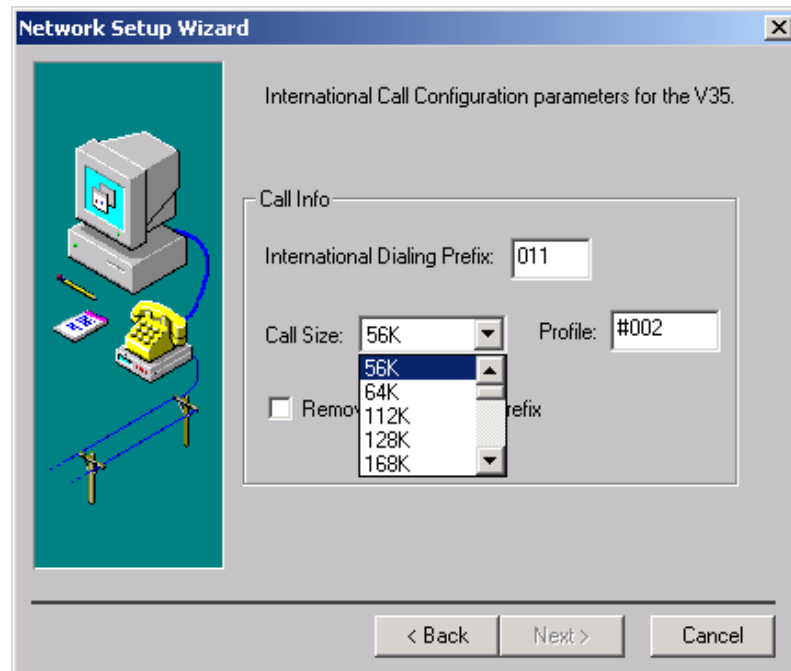
RS366 Ext 1 – Rs366 Ext 1 is supported for passing digits from the Zydacron application to the IMUX. When RS366 Ext 1 is selected you can assign a prefix or suffix to each call size. Enter the prefix or suffix digits in the call profile section. The digits entered should directly correspond to the profiles that are set up in the IMUX. Please refer to the IMUX user manual from your vendor for information concerning RS366 support for prefix or suffix format. When the user dials a number and selects a call size the application will automatically pass the number to the IMUX with the corresponding prefix or suffix. This setting is also referred to as “Dialed Support”

Direct – This setting should be used when call signaling is not present. In this mode the system will continuously transmit and receive H.320 data. Note: You must first dial a “1” from the dial pad initially to start sending and receiving information. You must dial from both endpoints at each end of the call to make a connection. This setting is also referred to as “Non-Dialed Support”. Some applications for this mode include communication over a T1 point to point or satellite communication.



5.5. International Calling:

Setup any configurations for international calling. When a number is programmed into the “International Dialing Prefix” the application will use the call profile programmed for international call use. This setting is used only when connecting to a PRI/ISDN IMUX. Once you have entered the international settings click on the back button to take you to the previous screen to complete the network setup.



Appendix A - Crypto Support

Interfaces:

The data ports support all the clock, data and control signals that are required by EIA RS-449 and CCITT V.35 specifications for operation in DTE mode. Electrical signal levels are compatible with both the RS-449 and V.35 requirements.

DTE Clocking:

The module accepts both TC and RC from the connected DCE. An optional timing mode allows RC to be used for both fifo's. See diagram.

Signaling:

A full set of DTE control signals is available to the host CPU. The output control signals (RTS, DTR) are set by the host software by writing to an I/O register on the module. The input control signals (DSR, DCD, CTS, RI) are provided to the host through a readable I/O register. In addition, these input control signals can generate an interrupt whenever they incur a change of state.

LOS signals are provided to support either KG or KIV encryption devices via selectable jumpers. The activation of the LOS signal is controlled by the software.

- LOS Timing
- KG-194 interface

All of the signal lines connecting to the KG-194 equipment will have differential balanced connections. During normal operation the LOS signal is in the logic "1" state. If the DDM-PCI board initiates a call or the application detects frame alignment loss condition then the LOS signal will be driven to a logic "0" state for 2^{18} to 2^{19} bits ± 3 ms.

